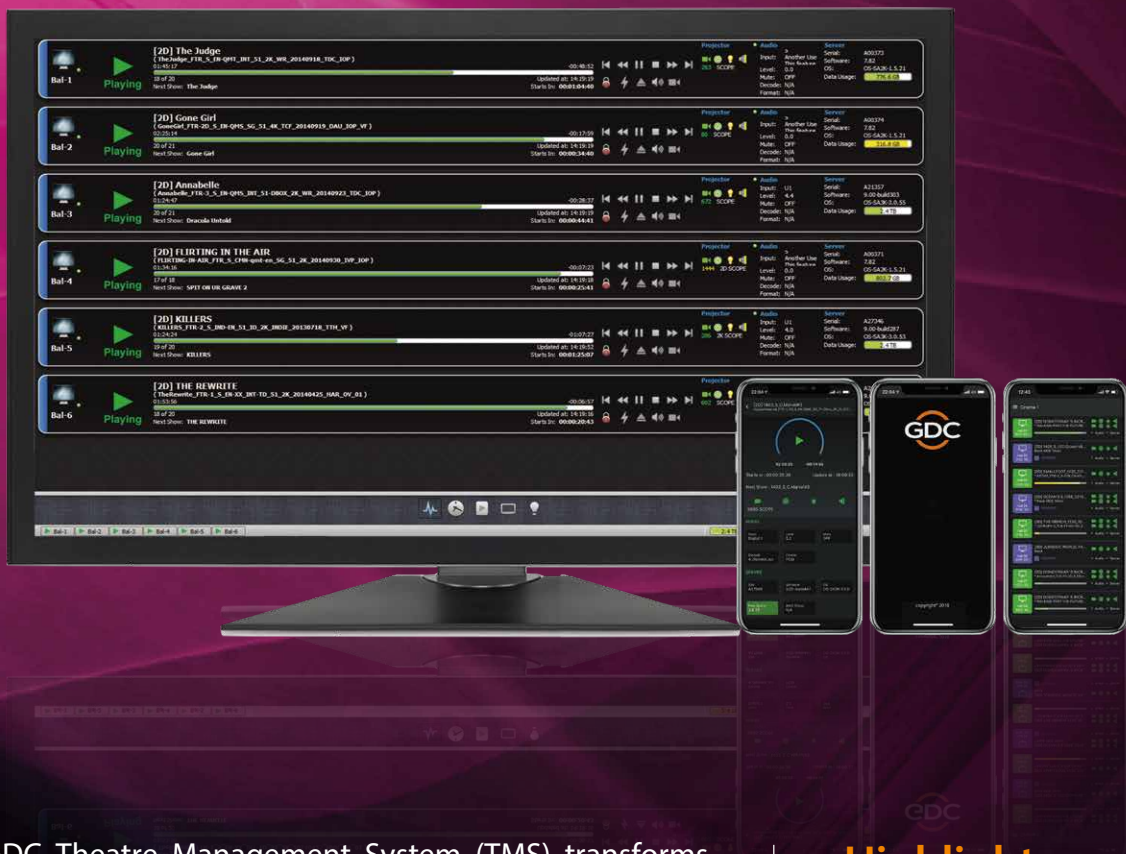


TMS-2000

Theatre Management System

Your comprehensive solution for centralized multiplex management



The GDC Theatre Management System (TMS) transforms the way you manage your multiplex. It provides seamless compatibility, streamlined operations, and centralized control, aiming to save you valuable time and effort. With refined features and user-friendly functionality, the TMS-2000 simplifies operations for theatre management, ensuring an exceptional moviegoing experience.

Highlights

- Experience effortless integration
- Maximize efficiency and productivity
- Manage your multiplex with advanced control

Copyright © 2024 GDC Technology Limited. All rights reserved. All trademarks listed in this brochure are properties of their respective owners. Specifications are subject to change without notice due to ongoing product development and improvement.



TMS-2000

Key Features

Complete Compatibility

GDC's TMS-2000 is a flexible software solution that works with all major brands of digital cinema equipment. The TMS-2000 is not constrained to bundled hardware but specifies the minimum hardware requirements for optimal performance and runs on the latest supported Microsoft Windows operating systems.

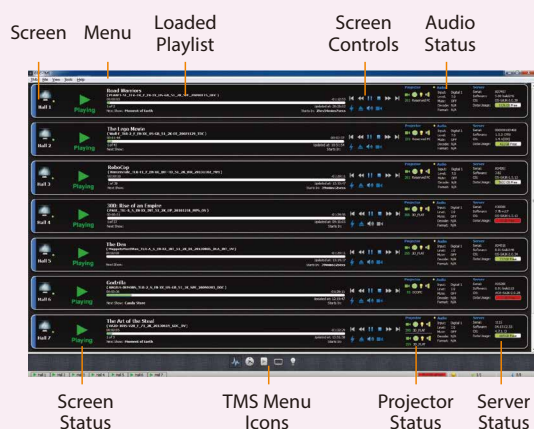
Fast Performance

Comprehensively redesigned with useful features and optimizations to serve all your needs, TMS-2000 allows you to take control right away with a faster start-up time. Your TMS experience has never been better.



Centralized Monitoring and Control

Now you can monitor every aspect of your cinema screens at a glance. The status of both projector and audio device are displayed with real-time information while the Projector and Sound Processor Controller give you the control you need.



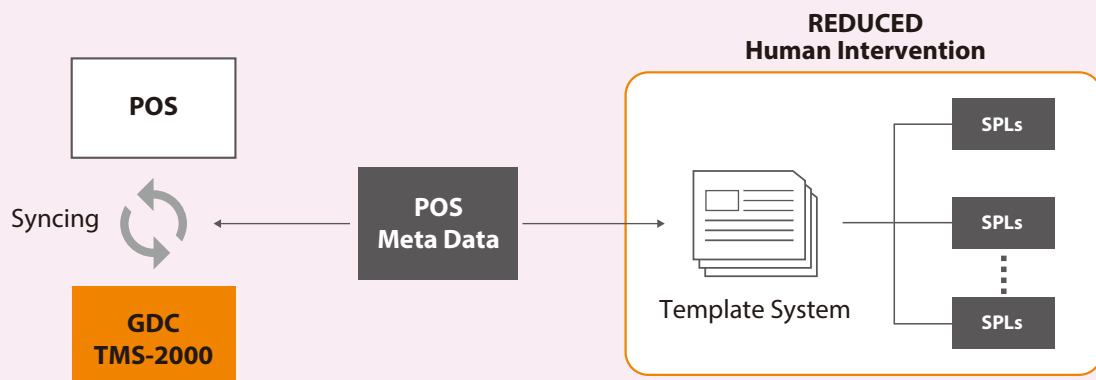
Convenient Show Scheduling

Show Scheduler lets you track and visualize all your scheduled shows for the day. Import your schedules from more than 41 pre-qualified POS. Add and delete them on your theatre screen with ease. Worried about scheduled shows not playing? If there's an invalid KDM or missing CPL, a built-in alert will automatically notify you and try to send those missing KDM/CPL to the digital cinema server.

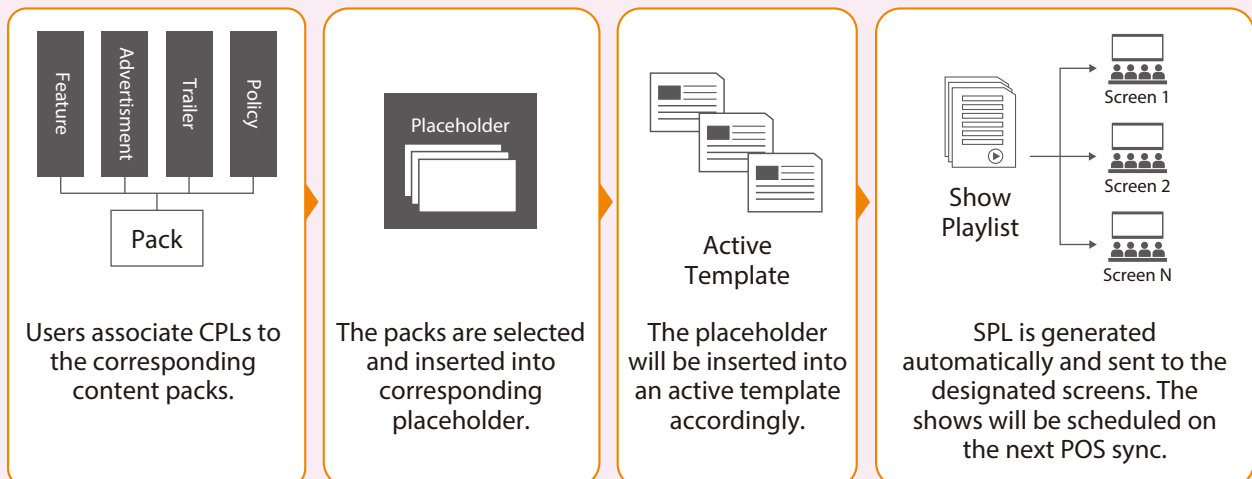


Streamlined Playlist Management

The TMS-2000's Auto-SPL is an advanced automation tool designed to streamline the process of populating Show Playlists (SPL) with Point-of-Sale (POS) scheduling. This robust mechanism enhances efficiency and accuracy in playlist management, saving you time and effort.

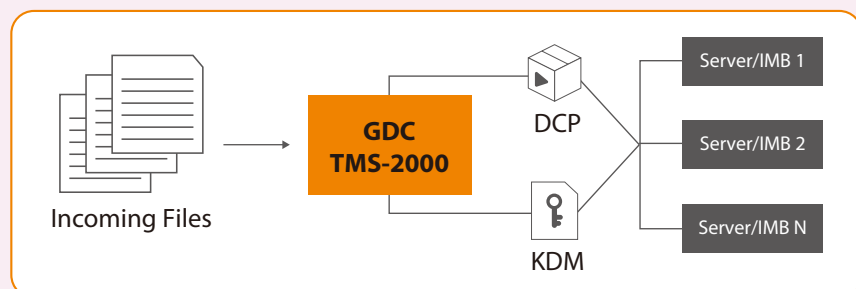


POS Scheduling with Auto-SPL can associate CPLs to titles and configure the settings, it will then generate SPL and schedule the shows accordingly.



Automatic New Content Detection

The Content Watcher lets you add ingest sources where it will keep on watching for new DCPs and KDMs. Ingest source can be a FTP server or removable drive connected to TMS machine. TMS will then automatically ingest once new DCPs and KDMs are found.

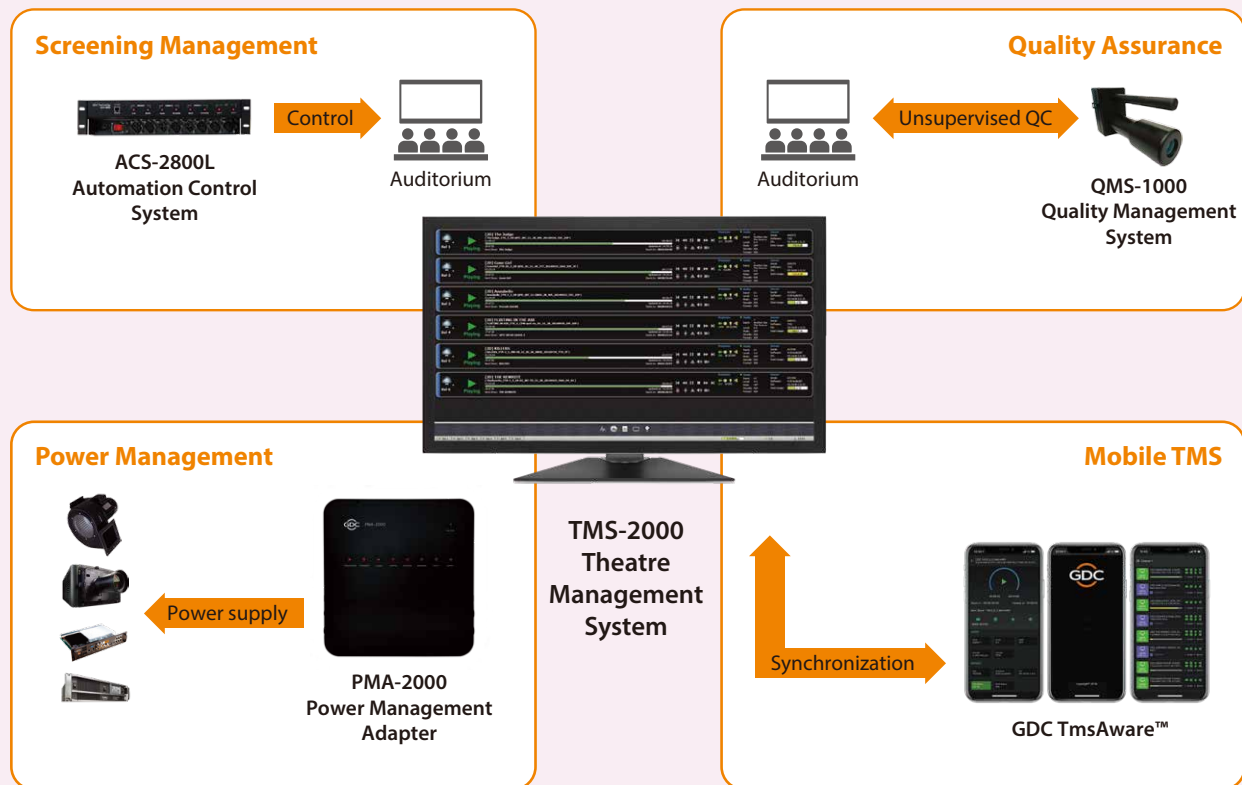


TMS-2000

Optional Features

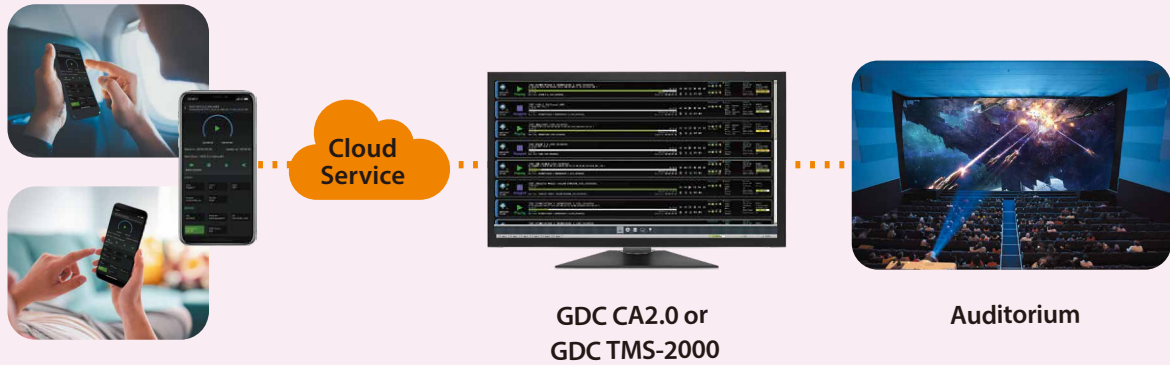
Support Comprehensive Automation Control

TMS-2000 is designed to meet all your theatre management and automation needs. It is a central contact point for screening management, power management and quality assurance.



TmsAware™ App

The TmsAware™ is a cloud-based platform that allows real-time monitoring of cinema operations anywhere, anytime without boundary. With TmsAware™, users can remotely monitor Cinema Automation CA2.0 or TMS to keep track of operations inside a multiplex. Checking the schedule of each screen and the status of cinema equipment through mobile device on-the-go does not only increase efficiency for cinema operators, but also enables prevention of faulty situations. In the case of abnormality, user's mobile device will receive an alert and operators can take timely measures to attend to the occurrence.



Main Features of TmsAware™



Current Screening

Quick view of the movies currently showing in each auditorium



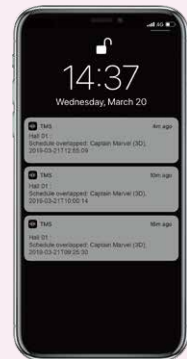
Equipment Monitoring

Real-time monitoring the operating status of digital cinema equipment



Movie Showtimes

Display scheduled shows in real-time



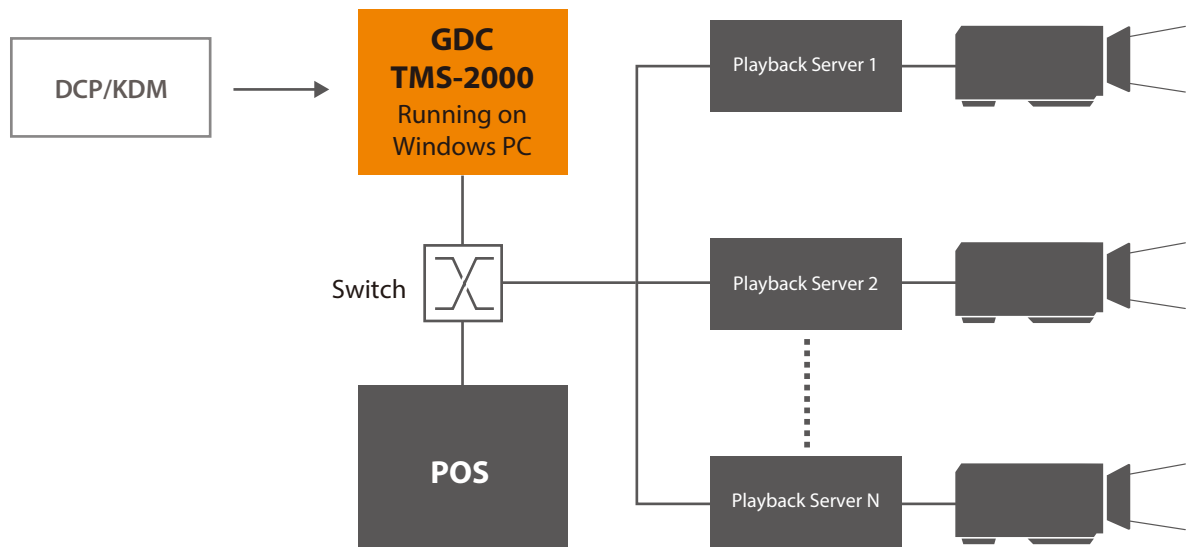
Notification Information

Push fault or alarm messages allow timely attention to abnormalities



TMS-2000 Architecture

The TMS-2000 delivers a new level of cinema management – with ease and ultra-high efficiency.



Technical Specifications

Recommended Operating Systems

- Microsoft Windows Server 2022
- Microsoft Windows Server 2019
- Microsoft Windows 11
- Microsoft Windows 10

Hardware Specifications

- Intel® Xeon® 8 Core Processor or better
- Recommended 16 GB ECC RAM or higher for enhanced reliability
- Wide screen display resolution 1920 x 1080
- Dual Lan
 - LAN1: 10/100/1000M Ethernet Adaptor (Management)
 - LAN2: 10/100/1000M Ethernet Adaptor (Content)
- OS Internal SSD (Minimum 256GB)
- Hardware RAID with multiple enterprise class disk with terabyte capacity
- CRU drive, eSATA and USB 3.0 (Optional for faster ingest of content)

Language Versions

- English
- Simplified Chinese
- Traditional Chinese
- French
- Russian
- Spanish
- Japanese
- Korean
- Indonesian
- Thai