

# TMS-2000

## Theatre Management System

Your comprehensive solution for centralized cineplex management



GDC Theatre Management System (TMS) is the ultimate next-generation theatre management solution giving you centralized control over the entire cineplex. Now with refined features and easier to use than ever, this digital cinema system automates and streamlines all theatre operations, making theatre management simple.



# TMS-2000

## Key Features

### Complete Compatibility

GDC's TMS-2000 is a flexible software solution that works with all major brands of digital cinema equipment. Unlike other TMS on the market, TMS-2000 is not bundled with any particular hardware, it runs on majority of Microsoft Windows platforms.

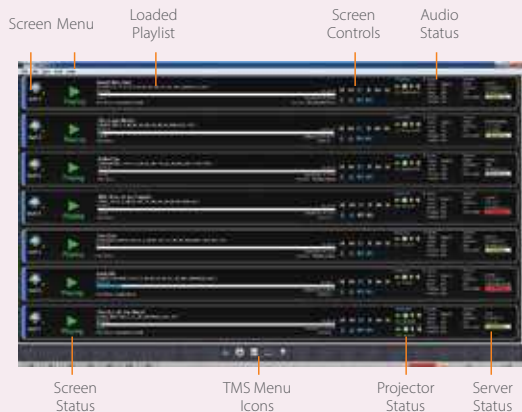
### Fast Performance

Comprehensively redesigned with useful features and optimizations to serve all your needs, TMS-2000 allows you to take control right away with a faster start-up time. Your TMS experience has never been better.



### Monitor and Control Your Screens from A Single Access Point

Now you can monitor every aspect of your cinema screens at a glance. The status of both projector and audio device are displayed with real-time information while the Projector and Sound Processor Controller give you the control you need.



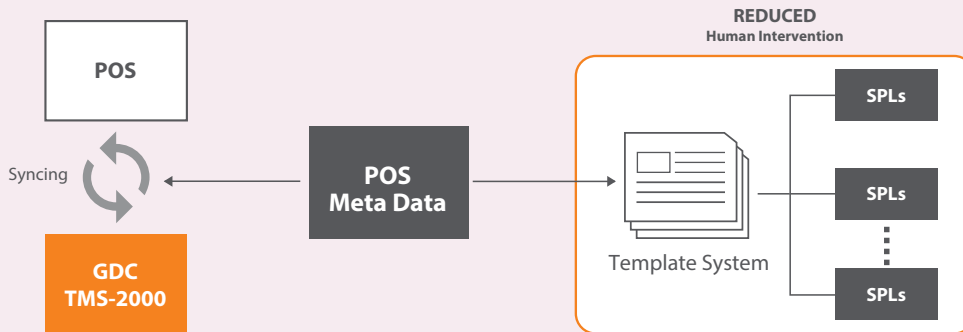
### Schedule Shows at Your Convenience

Show Scheduler lets you track and visualize all your scheduled shows for the day. Import your schedules from more than 30 pre-qualified POS. Add and delete them on your theatre screen with ease. Worried about scheduled shows not playing? If there's an invalid KDM or missing CPL, a built-in alert will automatically notify you and try to send those missing KDM/CPL to the digital cinema server.

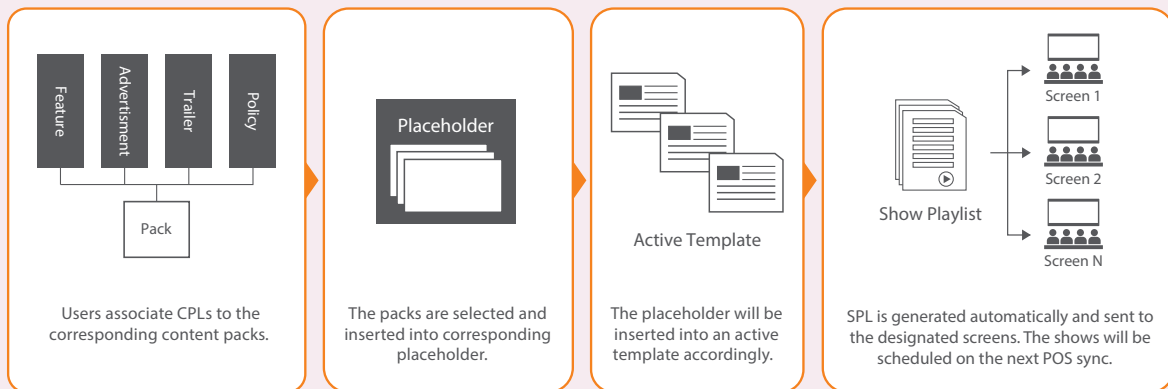


## Semi-Automated Show Scheduling by TMS Template System

The newly designed TMS Template System is a powerful semi-automated mechanism that helps to create Show Playlists (SPL) with POS scheduling. The process can be performed efficiently and accurately, with minimal human intervention.

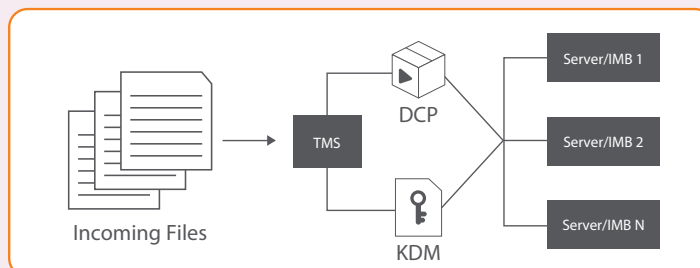


POS Scheduling with TMS Template System allows users to associate CPLs to titles and configure the settings, it will then generate SPL and schedule the shows accordingly.



## Automatic Detection of New Content by Content Watcher

Content Watcher lets you add ingest sources where it will keep on watching for new DCPs and KDMs. Ingest source can be a FTP server or removable drive connected to TMS machine. TMS will then automatically ingest once new DCPs and KDMs are found.

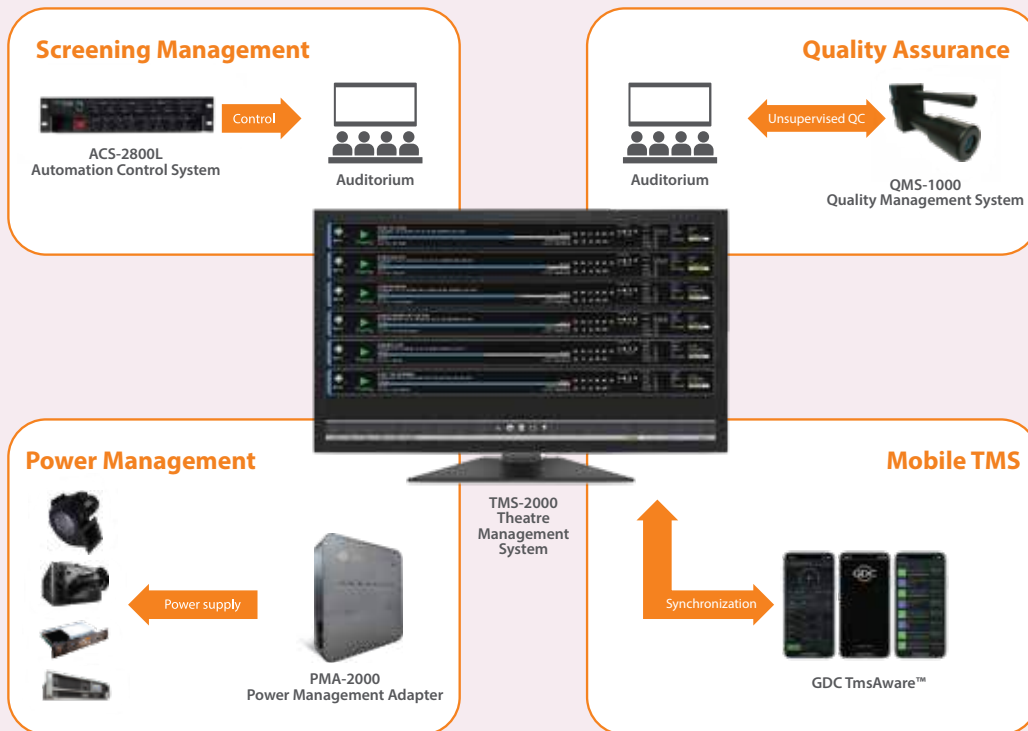


# TMS-2000

## Optional Features

### Support Comprehensive Automation Control

TMS-2000 is designed to meet all your theatre management and automation needs. It is a central contact point for screening management, power management and quality assurance.



## TmsAware™ App

The TmsAware™ is a cloud-based platform that allows real-time monitoring of cinema operations anywhere, anytime without boundary. With TmsAware™, users can remotely access Cinema Automation CA2.0 or TMS to keep track of operations inside a multiplex. Checking the schedule of each screen and the status of cinema equipment through mobile device on-the-go does not only increase efficiency for cinema operators, but also enables prevention of faulty situations. In the case of abnormality, user's mobile device will receive an alert and operators can take timely measures to attend to the occurrence.



## Main Features of TmsAware™



### Current Screening

Quick view of the movies currently showing in each auditorium



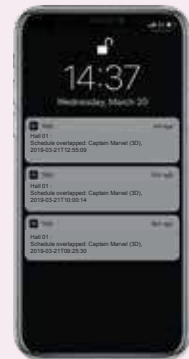
### Equipment Monitoring

Real-time monitoring the operating status of digital cinema equipment



### Movie Showtimes

Display scheduled shows in real-time



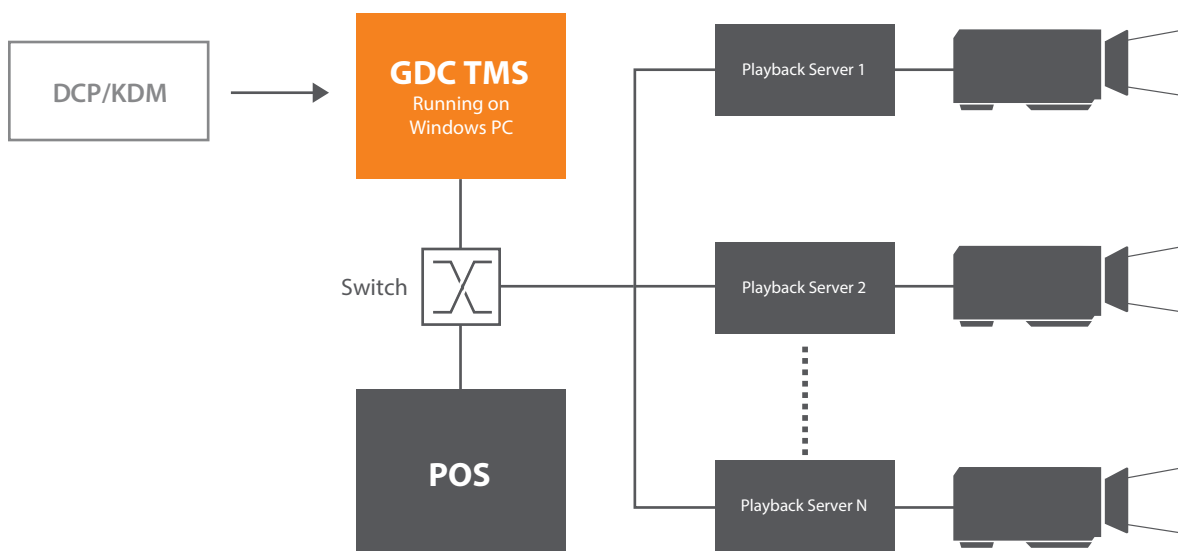
### Notification Information

Push fault or alarm messages allow timely attention to abnormalities



# TMS-2000 Architecture

The TMS-2000 delivers a new level of cinema management – with ease and ultra-high efficiency.



## Technical Specifications

### Recommended Operating Systems

- Microsoft Windows Server 2019
- Microsoft Windows Server 2016 / 2012
- Microsoft Windows Server 2008 R2
- Microsoft Windows 11
- Microsoft Windows 10
- Microsoft Windows 8

### Hardware Specifications

- Intel® Core™ Xeon® 8 Core Processor or better
- Recommended 16 GB RAM or higher
- Wide screen display resolution 1920 x 1080

- Dual Lan  
LAN1: 10/100/Ethernet Adaptor (Management)  
LAN2: 10/100/1000M Ethernet Adaptor (Content)
- OS Internal SSD (Minimum 256GB)
- Hardware RAID with multiple enterprise class disk with terabyte capacity
- CRU drive, eSATA and USB 3.0 (Optional for faster ingest of content)

### Language Versions

- English
- Simplified Chinese
- Traditional Chinese
- Korean
- Japanese
- Spanish
- Russian
- Thai
- Bahasa Indonesia