



**INSTALLATION MANUAL FOR  
SR-1000 STANDALONE MEDIA PLAYER  
(For use with Series 1 Projectors)**

---

*Version 7.90*

*October 17<sup>th</sup>, 2019*



# Table of Contents

<b>1</b>	<b>Introduction .....</b>	<b>5</b>
1.1	<i>Power &amp; Environmental Requirements .....</i>	<i>6</i>
<b>2</b>	<b>Packing List .....</b>	<b>7</b>
<b>3</b>	<b>Hardware Installation &amp; Setup .....</b>	<b>9</b>
3.1	<i>Remove the dummy cover plate from Metal Chassis .....</i>	<i>9</i>
3.2	<i>Insert the SR-1000 Media Block into the Metal Chassis.....</i>	<i>10</i>
3.3	<i>Connecting the SR-1000 with the Projector .....</i>	<i>11</i>
3.4	<i>Powering up the SR-1000 Standalone Media Player .....</i>	<i>13</i>
<b>4</b>	<b>Projector Configuration in SDI Mode.....</b>	<b>14</b>
<b>5</b>	<b>Supported Playback Formats.....</b>	<b>15</b>
<b>6</b>	<b>Converting SR-1000 from SDI Mode to IMB Mode.....</b>	<b>15</b>

---

***Thank you for purchasing a GDC SR-1000 Standalone Media Player from GDC Technology Limited.***

***To ensure proper operation and to maximize value of the SR-1000 Standalone Media Player, please review this Installation Manual. It will guide you through all the features and benefits of the new SR-1000 Standalone Media Player.***

## **COPYRIGHT NOTICE**

Copyright © 2019 by GDC Technology Limited

All rights reserved. No part of this manual may be copied or distributed, transmitted, transcribed, stored in a retrieval system, or translated into any human or computer language, in a form or by any means, electronic, mechanical, photocopying, recording, magnetic, optical, manual or otherwise, or disclosed to third parties without prior written permission of GDC Technology Limited.

## **MANUAL DISCLAIMER**

This manual is made with version 7.90 and there might be slight differences depending on the software version the Media Block is running. The contents, features and specifications stated in this manual are subject to change without notice due to continuous product development and improvements. In no other event shall GDC Technology Limited be liable for any loss of profit or any other commercial damages, including but not limited to special, consequential, or other damages.

## **FCC COMPLIANCE STATEMENT**

This device complies with Part 15 of the FCC Rules. Operation is subject to the following two conditions: (1) this device may not cause harmful interference, and (2) this device must accept any interference received, including interference that may cause undesired operation.

**NOTE:** This equipment has been tested and found to comply with the limits for a Class A digital device, pursuant to Part 15 of the FCC Rules. These limits are designed to provide reasonable protection against harmful interference when the equipment is operated in a commercial environment. This equipment generates, uses, and can radiate radio frequency energy and, if not installed and used in accordance with the instruction manual, may cause harmful interference to radio communications. Operation of this equipment in a residential area is likely to cause harmful interference in which case the user will be required to correct the interference at his own expense.

## CONTACTS AND OFFICES

Website: [www.gdc-tech.com](http://www.gdc-tech.com) Email: [info@gdc-tech.com](mailto:info@gdc-tech.com)

### 24/7 Engineering Support Hotline:

North America	+1 877 743 2872 (Toll Free)	Latin America	+52 55 8851 1198
Europe	+34 928 912 295	China	+86 400 886 0966 (Toll Free)
North Asia	+852 3520 0920	India	+91 022 4044 0500
South East Asia	+65 6100 4328	Australia/ New Zealand	+61 407 040 744

### Hong Kong (Headquarters)



Unit 1-7, 20th Floor,  
Kodak House II,  
39 Healthy Street East,  
North Point, Hong Kong

Tel: +852 2507 9555

### China (Beijing)



Rm. 609-618, Office  
Building, 20# Xinde Street,  
Xicheng District, Beijing,  
P.R. China 100088

Tel: +86 10 6205 7040

### China (Shenzhen)



Room A701, 7/F,  
Languang Technology Building,  
No.7 Xinxu Road, North Zone,  
HighTech Park, Nanshan District,  
Shenzhen, China  
Tel: +86 755 8608 6000

### Spain (Barcelona)



C/ Esteve Terradas, nº  
27, esc. D, Despacho 1  
08023 Barcelona, Spain

Tel: +34 93 159 51 75

### Peru (Lima)



Calle Manuel Miotto 170,  
Miraflores Lima 18, Peru

Tel: +51 1 340 5146

### USA (Los Angeles)



1016 West Magnolia  
Boulevard Burbank,  
CA 91506, USA

Tel: +1 818 972 4370 /  
+1 877 743 2872  
(Toll Free)

### Brazil (São Paulo)



Av. Antônio Carlos  
Comitre, 540, 3º andar,  
Conjunto 31, Campolim,  
Sorocaba / São Paulo,  
CEP 18047-620, Brasil

Tel: +55 15 33269301

### Singapore



10 Ubi Crescent,  
Ubi Tech Park,  
Lobby B, #06-25  
Singapore 408564  
Tel: +65 6222 1082

### Indonesia (Jakarta)



Total Building Lantai 4 Suite 0401,  
Jl. Letjen S. Parman Kav. 106A,  
Kel Tomang, Kec. Grogol Petamburan,  
Jakarta Barat 11440, Indonesia

Tel: +62 21 2920 4691

### Japan (Tokyo)



3F, Kyobashi-Chuo Bldg,  
1-14-7 Kyobashi Chuo-ku  
Tokyo 104-0031, Japan.

Tel: +81 3 5524 2607

### India (Mumbai)



B-207/208,  
Everest Chambers,  
Andheri Kurla Road,  
Marol, Andheri (East),  
Mumbai-400 059, India

Tel: +91 22 4044 0500

### Mexico (Mexico City)



S. de R.L. de C.V.,  
Av. Del penon 411  
esq. Ote 168,  
Col. Moctezuma 2<sup>a</sup>  
Sección,  
Venustiano Carranza,  
Distrito Federal,  
C.P. 01210 Mexico

Tel: +52 55 8526 6220

### United Arab Emirates (Dubai)



Business Centre,  
Dubai World Central,  
PO Box 390667,  
Dubai UAE

### Republic of Korea (Seoul)



4F, 127 YangHwa-ro,  
MaPo-gu, Seoul,  
Korea 04032

Tel: +82 10 7501 7480

# 1 Introduction

This document serves as a guide for setting up a **SR-1000 Standalone Media player** and installing it with a Series 1 Projector. The SR-1000 Standalone Media player consists of a metal chassis (as shown in **Figure 1**) and the SR-1000 Media Block with its faceplate. The faceplate has two BNC connectors for HD-SDI connections to a Series 1 Projector (as shown in **Figure 2**).

**Note:** Users of the SR-1000 Standalone Media Player Installation manual should refer to the SR-1000 Standalone Integrated Media Block Installation & User manuals before using this document.



Figure 1: Metal Chassis



Figure 2: SR-1000 Media Block with HD-SDI Connectors

## 1.1 Power & Environmental Requirements

- Environmental

Operating temperature - 0°C to 40°C (32°F to 104°F)

Operating humidity - 20% to 90%, non-condensing




Operating altitude - 10,000ft. (3,000m) above sea level

- Power

Input - 100-240V AC 47-63Hz 4.5-2A

## 2 Packing List

Contents of the SR-1000 Standalone Media Player package are as listed below:

SR-1000 Standalone Media Player Packing List			
Sr.No.	Description	Quantity	Actual Photograph
1	Metal Chassis	1	
2	SR-1000 Media Block	1	
3	BNC Cables (4m or 10m)	2	



4	International Standard Power Cord	1	
5	RJ45 AES Audio Cable	1#	
6	RJ45 GPIO Cables	2#	
7	Network Cable	1	
8	RJ45 to DB25 Audio Converter	1#	

# Subject to actual configuration. Please specify with our sales representative.

## 3 Hardware Installation & Setup

### 3.1 Remove the dummy cover plate from Metal Chassis

Before inserting the SR-1000 Media Block into the metal chassis, remove the dummy cover plate from the front panel of the chassis. Use a Phillips-head screwdriver to remove the screws on either side of the cover plate, as shown in **Figure 3**.



Figure 3: Remove cover plate

After removing the cover plate, affix the plate into the slot provided on the top panel of the metal chassis for safekeeping (as indicated in **Figure 4**)



Figure 4: Affix cover plate on top panel

As shown in **Figure 5**, take note of the positions of the HD-SDI connectors & the cables connected to the Media Block. The connector cables must be crossed, to minimize bending of the cables.

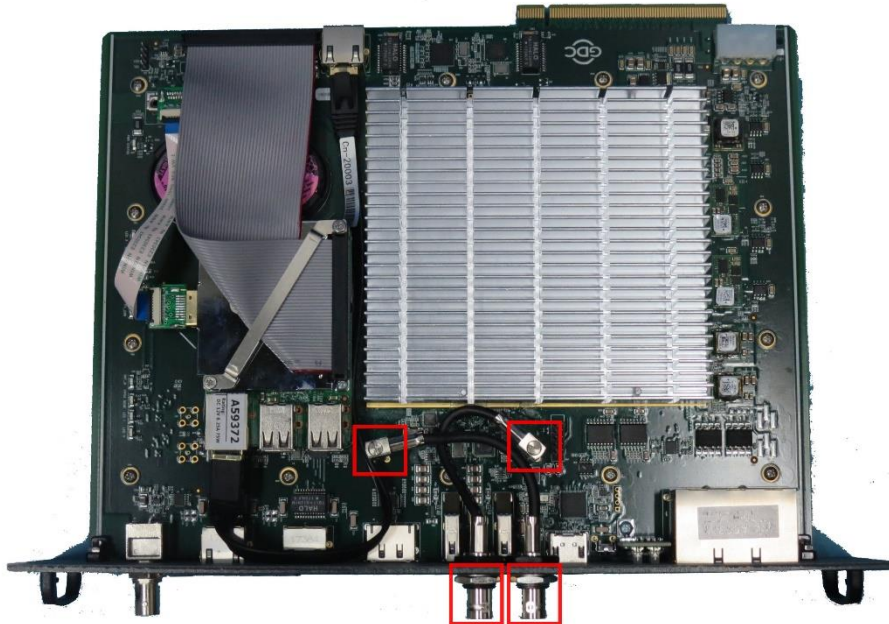


Figure 5: HD-SDI Connector cables on SR-1000 Media Block

### 3.2 Insert the SR-1000 Media Block into the Metal Chassis

Insert the SR-1000 Media Block into the metal chassis. While doing this, it is essential to align the Media Block properly against the side railings of the metal chassis, as highlighted in **Figure 8**. Make sure the PCI-e connector on the Media Block is inserted to the PCI-e connector at the rear of the chassis. The SR-1000 Media Block faceplate should be flush with the front panel of the chassis, once properly inserted.



Figure 6: Side Railings of Metal Chassis



Figure 7: PCI-e Connector of Metal Chassis



Figure 8: Side railings of Metal Chassis with Media Block inserted



Figure 9: Metal Chassis with Media Block inserted (front view)

### 3.3 Connecting the SR-1000 with the Projector

The SR-1000 Media Block should be connected to the Projector's link decryptor board using HD-SDI cables. Take note of the following connections:

- Connect '**SDI-OUT1**' from the Media Block to input '**A**' on the Link Decryptor
- Connect '**SDI-OUT2**' from the Media Block to input '**B**' on the Link Decryptor

A network connection is required from either the Media Block's **ETH1** or **ETH2** to the Projector's network port. Connect a network cable between the Media Block Ethernet port (**ETH1** or **ETH2**) to the Projector. Configure the **ETH1/ETH2** IP address from the WebUI interface under *System >> Network Configuration*.

**Note: The SR-1000 ETH1/ETH2 IP Address should belong to the same subnet as the Projector's IP Address.**



Figure 10: Cable connections on the SR-1000 Standalone Media Player



Figure 11: HD-SDI Cables connected to link decryptor board of Series 1 Projector

Once the HD-SDI Cables are connected, connect the SR-1000 Media Block to the Enterprise Storage unit or Portable Storage unit (PSD-Pe) using the eSATA cable provided in the Enterprise Storage/Portable Storage box.

For more information regarding the SR-1000's Network & Storage setup, please refer to the **SR-1000 Installation Manual**. Please refer to the **SR-1000 User Manual** for configuration & operation of the SR-1000.

### 3.4 Powering up the SR-1000 Standalone Media Player

Connect one end of the power cord to the power inlet of the metal chassis & the other end to a recommended power outlet. Switch the Power button on the front panel of the chassis to ON position. Once the Media Block boots up, the WebUI Interface of the SR-1000 can be accessed from a laptop/PC connected to the SR-1000 **ETH1/ETH2** network. For more details regarding how to access the SR-1000 WebUI Interface, please refer to the **SR-1000 User Manual**.

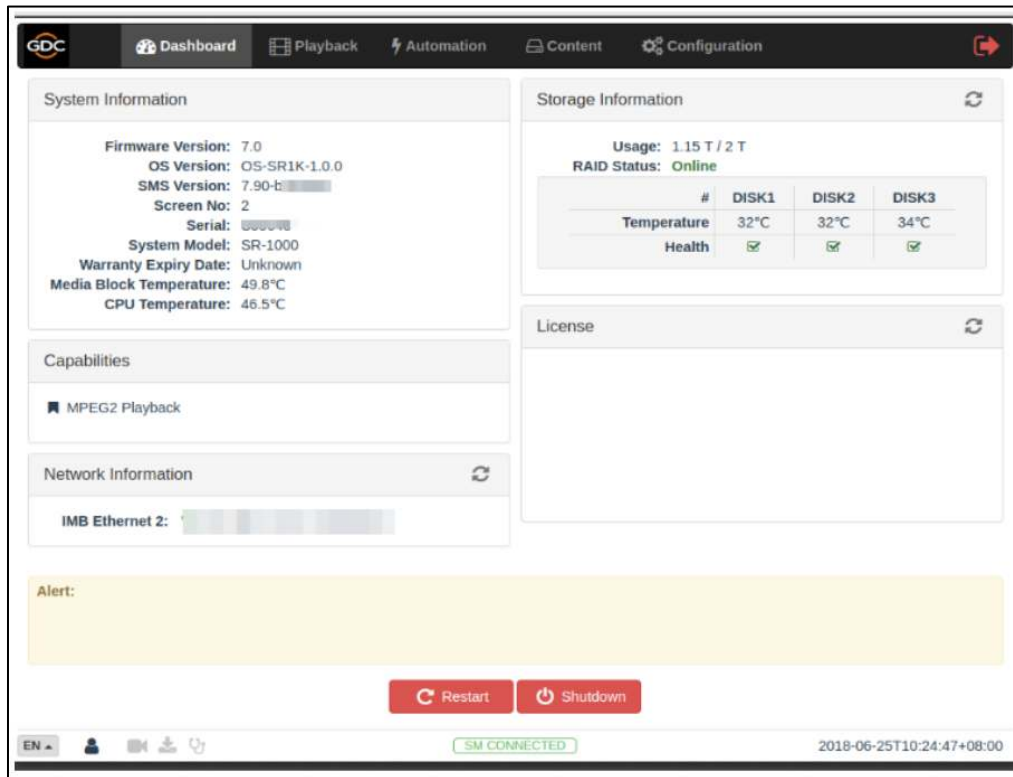


Figure 12: SR-1000 WebUI Interface

## 4 Projector Configuration in SDI Mode

For the HD-SDI link decryption to work, the Projector's IP must be configured on the SR-1000.

To do this:

1. Go the WebUI Interface & click on the **Configuration** menu.
2. Under the Configuration screen, select the **Playback** tab.
3. Under the *Projector* section, enter the IP Address of the Projector & click on the **Save** button.

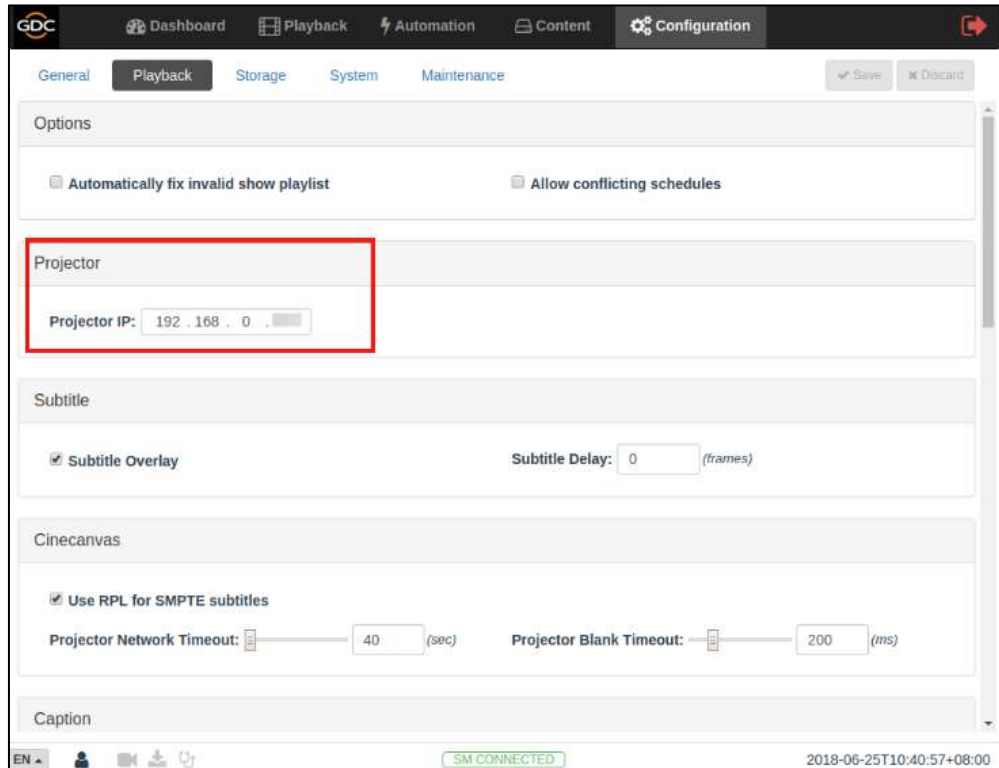


Figure 13: Set Projector IP

Set the correct macro (video input to Projector is 'SDI') on the Projector and turn on the lamp.

On the WebUI, load a playlist and start the playback to check if content can be played successfully. For more details regarding this, please refer to the **SR-1000 User Manual**.

**Note: The Tamper LED will never be lit when the SR-1000 is in SDI mode.**

## 5 Supported Playback Formats

The following formats and frame rates have been tested and are supported by the SR-1000 Standalone Media Player:

<b>JPEG2000 Playback:</b>	2K - 2D upto 30fps
	2K - 3D 24fps
<b>MPEG2 Playback:</b>	1080p - 2D 24fps
<b>HDMI Input:</b>	1080p - 2D 24fps
	1080p - 3D 24fps

## 6 Converting SR-1000 from SDI Mode to IMB Mode

It is possible to convert a SR-1000 in S1 mode to IMB mode, so that it be used with [Series 2/](#)[Series 3](#) Projectors. Please contact your nearest GDC Regional Office for more information regarding how this conversion can be done.



## GDC Technology Offices

### Hong Kong (Headquarters)

Unit 1-7, 20th Floor,  
Kodak House II,  
39 Healthy Street East,  
North Point, Hong Kong.  
Tel: +852 2507 9555

### China (Beijing)

Rm. 609-618, Office Building,  
20# Xinde Street,  
Xicheng District,  
Beijing, P.R. China 100088  
Tel: +86 10 6205 7040

### China (Shenzhen)

Room A701, 7/F,  
Languang Technology Building,  
No.7 Xinxu Road,  
North Zone,  
High-Tech Park,  
Nanshan District,  
Shenzhen, China  
Tel: +86 755 8608 6000

### Spain (Barcelona)

C/ Esteve Terradas,  
nº 27, esc. D, Despacho 1,  
08023 Barcelona, Spain  
Tel: +34 93 159 51 75

### Peru (Lima)

Calle Manuel Miota 170  
Miraflores Lima 18, Perú  
Tel: +51 1 340 5146

### USA (Los Angeles)

1016 West Magnolia Boulevard  
Burbank, CA 91506, USA  
Tel: +1 818 972 4370 /  
+1 877 743 2872 (Toll Free)

### Republic of Korea (Seoul)

4F, 127 YangHwa-ro,  
MaPo-gu, Seoul,  
Korea 04032  
Tel: +82 10 7501 7480

Email: [info@gdc-tech.com](mailto:info@gdc-tech.com)  
Website: [www.gdc-tech.com](http://www.gdc-tech.com)

### ISO 9001 QMS



Cert. No. CN09/32221

GDC Technology manufacturing facility is ISO 9001:2008 certified.

Copyright © 2019 GDC Technology Limited. All rights reserved. All trademarks listed in this manual are properties of their respective owners.

Specifications are subject to change without notice due to ongoing product development and improvement

[UM-0738-1803-V1E](#)

### Brazil (São Paulo)

Av. Antônio Carlos Comitre, 540,  
3º andar, Conjunto 31, Campolim,  
Sorocaba / São Paulo, CEP 18047-620, Brasil  
Tel: +55 15 33269301

### Singapore

10 Ubi Crescent, Ubi Tech Park  
Lobby B, #06-25, Singapore 408564  
Tel: +65 6222 1082

### Indonesia (Jakarta)

Total Building Lantai 4 Suite 0401,  
Jl. Letjen S. Parman Kav. 106A,  
Kel. Tomang, Kec. Grogol Petamburan,  
Jakarta Barat 11440, Indonesia  
Tel: +65 21 2920 4691

### Japan (Tokyo)

3F, Kyobashi-Chuo Bldg,  
1-14-7 Kyobashi Chuo-ku,  
Tokyo 104-0031, Japan  
Tel: +81 3 5524 3607

### India (Mumbai)

B-207/208, Everest Chambers,  
Andheri Kurla Road, Marol, Andheri (East),  
Mumbai-400 059, India  
Tel: +91 22 4044 0500

### Mexico (Mexico City)

Av. Del peñon 411 esq. Ote 168  
Col. Moctezuma 2ª Sección,  
Venustiano Carranza, Distrito Federal,  
C.P. 01210 Mexico  
Tel: +52 55 8526 6220

### United Arab Emirates (Dubai)

Business Centre,  
Dubai World Central,  
PO Box 390667,  
Dubai UAE